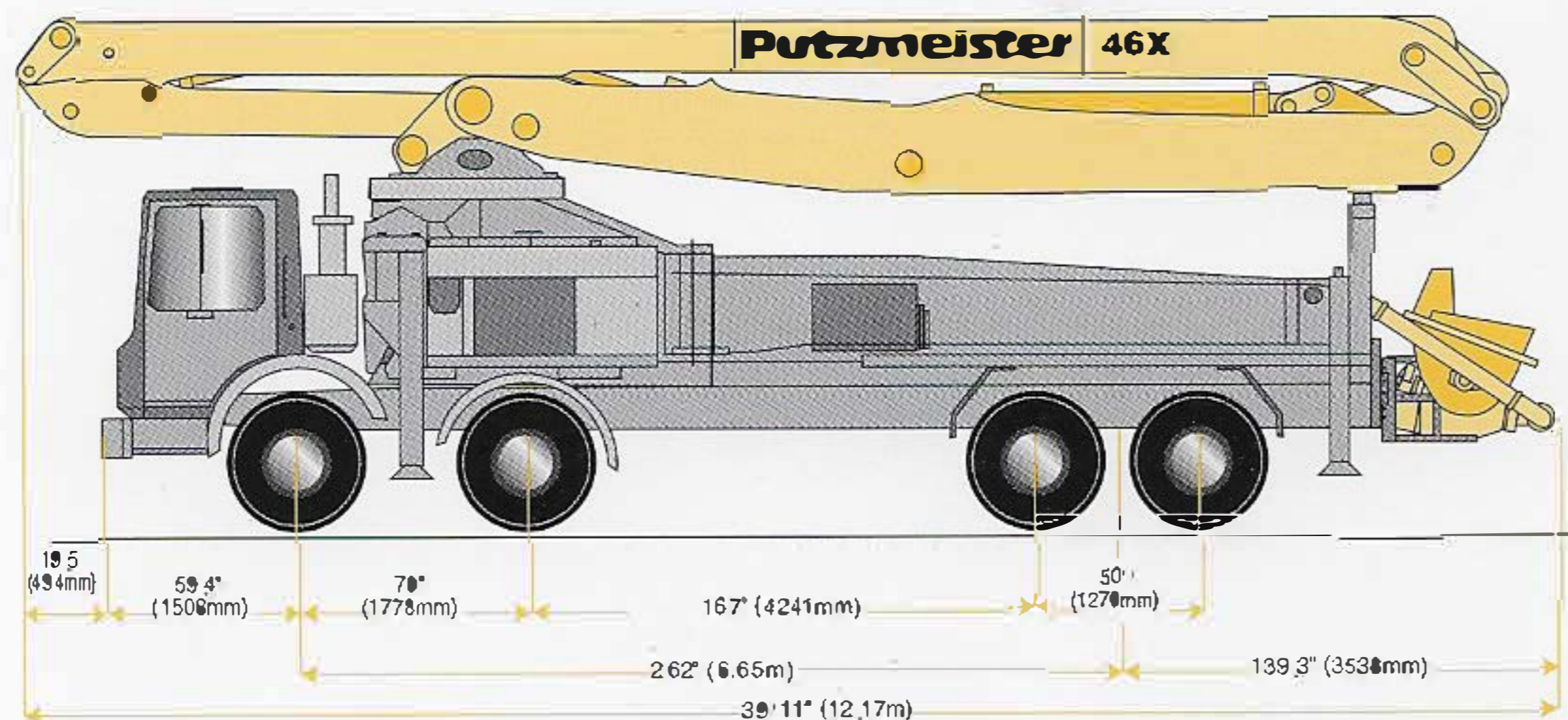


Specifications

46X-Meter Concrete Pump



Truck-Mounted Specifications

Based on Model MACK MR 688S
with .16H pump cell

Length	39'11"	(12.17m)
Width	8'2"	(2.50m)
Height	13'1"	(3.99m)
Wheelbase	262"	(6654mm)
Front axle weight*	39,647 lbs	(17,981kg)
Rear axle weight*	38,825 lbs	(17,608kg)
Approx total weight*	78,472 lbs	(35,589kg)

Weights are approximate and include pump, boom, truck, full hydraulic oil, driver and some fuel. Varies with options selected.

Dimensions will vary with different truck makes, models and specifications.

Boom Specifications • Roll and Fold Design

Height & Reach

Vertical reach	148'4"	(45.20m)
Horizontal reach	136'2"	(41.50m)
Reach from front of truck*	127'0"	(38.71m)
Reach depth	108'3"	(33.00m)
Unfolding height	40'4"	(12.30m)

4-Section Boom

1st section articulation	170°
2nd section articulation	177°
3rd section articulation	180°
4th section articulation	213°

1st section length	25'3"	(7.70m)
2nd section length	37'1"	(11.30m)
3rd section length	37'1"	(11.30m)
4th section length	36'9"	(11.20m)

General Specs

Pipeline size (ID) metric ends with couplings	5"	(125mm)
Rotation	365°	
End hose-length (heavy duty)	10'	(3m)
End hose-diameter	5"	(125mm)
Outrigger spread L-R-front telescopic diagonal	26'3"	(8.00m)
Outrigger spread L-R-rear swing-out	29'6"	(9.00m)

Pump Specifications

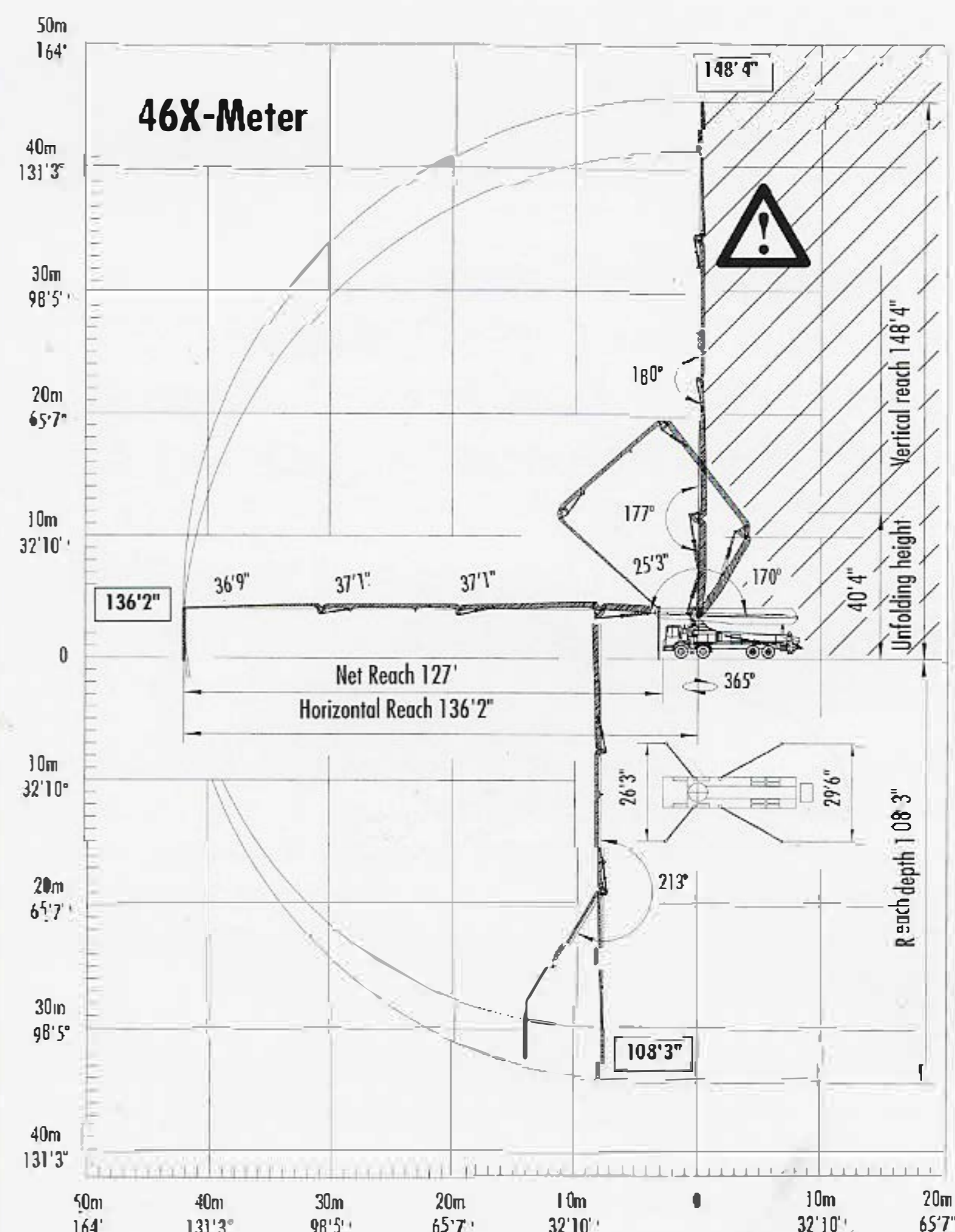
	46X.16H		46X.20H	
Output- rod side	210 yd ³ /hr	(160m ³ /hr)	—	—
piston side	146 yd ³ /hr	(112m ³ /hr)	260 yd ³ /hr	(200m ³ /hr)
Pressure- rod side	1233 psi	(85 bar)	—	—
piston side	1885 psi•	(130 bar)•	1233 psi•	(85 bar)•
Concrete cylinder diameter	9"	(230mm)	11"	(280mm)
Stroke length	83"	(2100mm)	83"	(2100mm)
Max strokes per minute-				
rod side	—	31	—	—
piston side	—	21	—	28
Volume control	—	0-Full	—	0-Full
Vibrator	—	Standard	—	Standard
Hard chromed concrete cylinders	—	Standard	—	Standard
Hydraulic system	—	Free Flow	—	Free Flow
Hydraulic system pressure	5075 psi	(350 bar)	5075 psi	(350 bar)
Differential cylinder diameter	5.5"	(140mm)	5.5"	(140mm)
Rod diameter	3.1"	(80mm)	3.1"	(80mm)
Maximum size aggregate	2.5"	(63mm)	2.5"	(63mm)
Water tank - pedestal	40 gal	(150L)	40 gal	(150L)
- outrigger	172 gal	(650L)	172 gal	(650L)

Maximum theoretical values listed.

* Applies to units mounted on PMA stock truck-MACK MR 688S

• Standard delivery line system rated at max line pressure of 1233 psi (85 bar)

Right to make technical amendments reserved.



End hose not to be operated in caution area.



Putzmeister America
1733 90th Street
Sturtevant
Wisconsin 53177 USA

Telephone (262) 886-3200
(800) 884-7210
Facsimile (262) 884-6338
www.putzmeister.com